

RUNNER10R

RUNNER10Y

**PROFESSIONAL SOUND
LOUDSPEAKER**

USER MANUALS

Segon[®]
PROFESSIONAL AUDIO

Many thanks to buy our model, please read and reference this manual carefully before operate the unit. Please keep the manual for future operation reference.

Important: Due to this is a universal manual for our PA and MB series model. Your ordered model(depend on model) may not include all functions on this manual, so you can choose and reference the relative content for the function operation correspond to your ordered model.

IMPORTANT SAFETY INSTRUCTIONS



Caution:

To reduce the risk of electric shock, do not dismantle the product and do not expose the apparatus to rain or moisture. No user-serviceable parts inside. Refer servicing to qualified personnel only.

Explanation of Graphical Symbols:



The lightning flash within an equilateral triangle is intended to alert you to the presence of uninsulated dangerous voltage within the product's enclosure that may be of sufficient magnitude to constitute an electric shock to a person or persons.



The exclamation point within an equilateral triangle is intended to alert you to the presence of important operating and maintenance (servicing) instructions in the literature accompanying the product.

To achieve the utmost in enjoyment and performance, and in order to become familiar with its features, please read this manual carefully before attempting to operate this product. This will assure you years of trouble free performance and listening pleasure.

Important Notes

This safety and operating instruction should be retained for future reference.

- a. The apparatus should not be exposed to dripping or splashing or placed in a humid atmosphere such as a bathroom.
- b. Do not install the product in the following areas:
 - a). Places exposed to direct sunlight or close to radiators.
 - b). On top of other stereo equipment that radiate too much heat.
 - c). Blocking ventilation or in a dusty area.
 - d). Areas where there is constant vibration.
 - e). Humid or moist places.
- c. Do not place near candles or other naked flames.
- d. Operate the product only as instructed in this manual.
- e. Before turning on the power for the first time, make sure the power adaptor is properly connected.

For safety reasons, do not remove any covers or attempt to gain access to the inside of the product. Refer any servicing to qualified personnel.

Do not attempt to remove any screws, or open the casing of the unit; there are no user serviceable parts inside. Refer all servicing to qualified service personnel.

SAFETY INSTRUCTIONS

- 1. Read Instructions** - All the safety and operating instructions must be read before the product is operated.
- 2. Retain Instructions** - The safety and operating instructions should be kept with the product for future reference.
- 3. Heed warnings** - All warnings on the product and in the operating instructions should be adhered to.
- 4. Follow instructions** - All operating and users' instructions should be followed.
- 5. Installation** - Install in accordance with the manufacturer's instructions.
- 6. Power sources** - This product should be operated only from the type of power source indicated by the marking adjacent to the power cord entry. If you are not sure of the type of power supply to your home, consult your product dealer or local power company.
- 7. Grounding or polarization** - the product is not required to be grounded. Ensure that the plug is fully inserted into the wall outlet or extension cord receptacle to prevent blade or pin exposure. Some versions of the product are equipped with a power cord fitted with a polarized alternating line plug (a plug having one blade wider than the other). This plug will fit onto the power outlet only one way. This is a safety feature. If you are unable to insert the plug fully into the outlet, try reversing the plug. If the plug should still fail to fit, contact your electrician to replace your obsolete outlet. Do not defeat the safety purpose of the polarized plug. When using an extension power-supply cord or a power-supply cord other than that supplied with the appliance, it should be fitted with the appropriate molded plugs and carry safety approval appropriate to the country of use.
- 8. Power cord protection** - Power-supply cords should be routed so that they are not likely to be walked on, kinked or pinched by items placed on or against them, paying particular attention to cords from plugs, receptacles and the point where they exit from the product.
- 9. Overloading** - Do not overload wall outlets, extension cords, or multiple sockets, as this can result in a risk of fire or electric shock.
- 10. Ventilation** - The product must be properly ventilated. Do not place the product on a bed, sofa, or other similar surface. Do not cover the product with any items such as tablecloths, newspapers, etc.

11. Heat - The product should be situated away from heat sources such as radiators, heat registers, stoves, or other products, including amplifiers that produce heat. No naked flame sources, such as lighted candles, should be placed on the apparatus.

12. Water and moisture - To reduce the risk of fire or electric shock, do not expose the product to rain, dripping, splashing or excessive moisture such as in a sauna or bathroom. Do not use this product near water, for example, near a bathtub, washbowl, kitchen sink, laundry tub, in a wet basement or near a swimming pool (or similar).

13. Object and Liquid Entry - Never push objects of any kind into this product through openings, as they may touch dangerous voltage points or short circuit parts that could result in a fire or electric shock. Never spill liquid of any kind on the product. Do not place any object containing liquid on top of the product.

14. Cleaning - Unplug the product from the wall outlet before cleaning. Dust in the woofer may be cleaned with a dry cloth. If you wish to use an aerosol cleaning spray, do not spray directly on the cabinet; spray onto the cloth. Be careful not to damage the drive units.

15. Attachments - Do not use attachments not recommended by the product manufacturer, as they may cause hazards.

16. Accessories - Do not place this product on an unstable cart, stand, tripod, bracket or table. The product may fall, causing serious injury to a child or adult, and serious damage to the product. Use only with a cart, stand, tripod, bracket or table recommended by the manufacturer or sold with the product. Any mounting of the product should follow the manufacturer's instructions and should use a mounting accessory recommended by the manufacturer.

17. Moving the product - A product and cart combination should be moved with care. Quick stops, excessive force and uneven surfaces may cause the product and cart combination to overturn.

18. Unused periods - The power cord of the appliance should be unplugged from the outlet during lightning storms or when the apparatus is left unused for a long period of time.

19. Servicing - Do not attempt to service this product yourself, as opening or removing covers may expose you to dangerous voltage or other hazards. Refer all servicing to qualified service personnel.

20. Please remove the power plug from the main power source or wall power source when not in use. When plugged in to a power source, the system is in standby mode, so the power is not entirely cut off.

21. Replacement parts - When replacement parts are required, ensure that the service technician has used replacement parts specified by the manufacturer or have the same characteristics as the original part. Unauthorized substitutions may result in fire, electric shock or other hazards.

22. Mains fuses - For continued protection against fire hazard, use fuses only of the correct type and rating. The correct fuse specification for each voltage range is marked on the product.

23. Do not turn up the volume while listening to a section with very low level inputs or no audio signals. If you do, the speaker may be damaged when a peak level section is suddenly played.

24. The only means of completely disconnecting the product from the power supply is by removing the power cord from the wall outlet or the product. The wall outlet or the power cord entry to the product must remain freely accessible at all times while the product is in use.

25. Try to install the product near a wall socket or extension cord and shall be easily accessible.

26. The highest environmental temperature suitable for this product is 35°C.

27. ESD hints - The normal function of the product may be disturbed by strong Electro-Magnetic Interference. If so, simply reset the product to resume normal operation by following the instruction manual. In case the function could not resume, please use the product in other location.

28. Battery

1). The batteries must not be exposed to excessive heat such as sunshine, fire or the like.

2). The batteries should be drawn to the environmental aspects of battery disposal.

3). Battery usage CAUTION-to prevent battery leakage which may result in body injuries, property damage, or damage to the apparatus:

-
- Install all batteries correctly, + and – as marked on the apparatus.
 - Do not mix batteries (old and new or carbon and alkaline, etc.)
 - Remove batteries when the unit is not used for a long time.



The Bluetooth® word mark and logos are registered trademarks owned by Bluetooth SIG, Inc. and any use of such marks by us is under license. Other trademarks and trade names are those of their respective owners.

ERP2 - (Energy Related Products) note

This product with ecodesign complies with the stage 2 requirements of Commission Regulation (EC) NO. 1275/2008 implementing Directive 2009/125/EC regard to standby and off mode electric power consumption of electronic household and office equipment. After 15 minutes without any audio input, the device will automatically switch into standby mode. Follow up the instruction manual to resume the operation.

Important note:

This device is equipped with an energy saving mode: if no signal is given during 15 minutes the device will switch automatically into standby mode in order to save energy (ERP 2 standard). Please note that low volume setting in the audio source may be recognized as "no audio signal": this will affect the capability of signal detection from the device and can also originate an automatic switch into standby mode. If this happens please reactivate the audio signal transmission or increase the volume setting on the audio source player (MP3 player, etc.), in order to resume playback. Please contact the local service center if the problem remains.

Warning

This appliance is not intended for use by persons (including children) with reduced physical sensory or mental capabilities, or lack of experience and knowledge, unless they have been given supervision or instruction concerning use of the appliance by a person responsible for their safety. Children should be supervised to ensure that they do not play with the appliance.

1. To prevent possible hearing damage, do not listen at high volume levels for long time periods respectively a sudden high volume level.



2. Never use the device unsupervised! Switch off the device whenever you are not using it, even if this only for a short while.
3. The appliance is not intended to be operated by means of an external timer or separate remote control system.

-
4. If the supply cord is damaged, it must be replaced by the manufacturer, its service agent or similarly qualified persons in order to avoid a hazard.
 5. Before operating this system, check the voltage of this system to see if it is identical to the voltage of your local power supply.
 6. The unit should not be impeded by covering the ventilation opening with items such as newspaper, table-cloths, curtains etc. Make sure that there are at least 20 cm of space above and at least 5 cm of space on each side of the unit.
 7. The apparatus must not be exposed to dripping or splashing and that objects filled with liquids, such as vases, must not be placed on the apparatus.
 8. To prevent fire or shock hazard, do not expose this equipment to hot places, rain, moisture or dust.
 9. Do not locate this unit near any water sources e.g. taps, bathtubs, washing machines or swimming pools. Ensure that you place the unit on a dry, stable surface.
 10. Do not place this unit close to a strong magnetic field.
 11. Do not place the unit on an amplifier or receiver.
 12. Do not place this unit in a damp area as the moisture will affect the life of electric components.
 13. If the system is brought directly from a cold to a warm location, or is placed in a very damp room, moisture may condense on the lens inside the player. If this occurs, the system will not operate properly. Please leave the system turned on for about an hour until the moisture evaporates.
 14. Do not attempt to clean the unit with chemical solvents as this might damage the finish. Wipe with a clean, dry or slightly damp cloth.
 15. When removing the power plug from the wall outlet, always pull directly on the plug, never pull on the cord.
 16. The mains plug is used as the disconnect device, the disconnect device must remain readily operable.

NOTICE



Conformity

Hereby, Blaupunkt Competence Center 2N-Everpol Sp. z o.o., declares that this equipment is in compliance with the essential requirement and other relevant provisions of Directive 2014/53/EU. Declaration of conformity can be obtained from the product page at www.blaupunkt.com.
Responsible party: 2N-Everpol Sp. z o.o, Puławska 403A, 02-801 Warsaw, Poland,
Phone: +48 22 331 99 59, E-mail: info@everpol.pl



Your products is designed an manufactured with high quality materials and components, which can be recycled and reused.



When this crossed-out wheeled bin symbol is attached to a product it means that the product is covered by the European Directive 2012/19/EU. Please inform yourself about the local separate collection system for electrical and electronic products. Please cat according to your local rules and do not dispose of your old products with your normal household waste. Correct disposal of your old product helps to prevent potential negative consequences for the environment and human health.



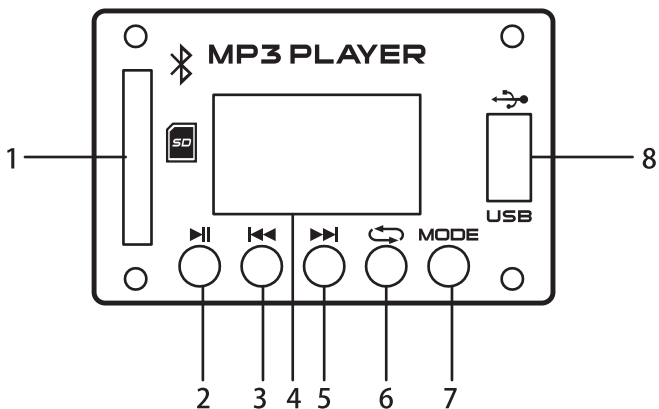
Your product contains batteries covered by the European Directive 2006/66/EC, which cannot be disposed with normal household waste. Please inform yourself about the local rules on separate collection of batteries because correct disposal helps to prevent negative consequences for the environmental and human health.

Environmental information

All unnecessary packaging has been omitted. We have tried to make the packaging easy to separate into three materials: cardboard(box), polystyrene foam(buffer) and poly ethylene (bags, protective foam sheet). Your system consists of material which can be recycled and reused if disassembled by a specialized company. Please observe the local regulations regarding the disposal of packaging materials, exhausted batteries and old equipment.

Recording and playback of material might require consent. See Copyright Act 1956 and The Performer's Protection Acts 1958 to 1972.

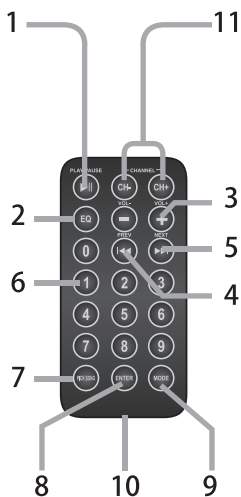
Control panel



- 1- SD card slot;
- 3- Previous button;
- 5- Next button;
- 7- Mode button;

- 2- Play/pause button;
- 4- Display;
- 6- Repeat button;
- 8- USB port;

Remote control



1. Press to play a song or pause while playing a song .Program radio FM stations.
2. In play mode press to set one equalizer mode.
3. Vol+ /Vol-
4. Previous: Press once to jump previous song , press and hold to rewind.
5. Next :Press once to jump next song, press and hold to fast-froward .
6. Keys :Use this key to select the number of a desired track.

7. Pick song :Allows you to select the song want to listen to so direct ,for example: if you want to hear the song no.11, first press the number 11 then press this button.
8. ENTER : Choose repeat mode.
9. MODEL :Select an operating modality ,the options are SD/USB.FM radio and AUX.
- 10.Battery compartment (CR2025)
- 11.select a FM frequency.

Power connection

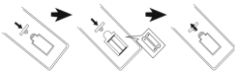
Please check if the power source is correspond to the rating voltage spec which locates on the panel of unit. If it does not matching, please consult to your dealer or service center.

Insert the female terminal of power cord into the AC outlet, and then connect the power plug with the wall-mount socket in order to get the power source. Then switch on the main power button to turn on the display screen which means the power connection is succeed now.



Remote control battery installation

Open up the battery door and insert 2 x AAA dry battery into the compartment; please make sure the polarity of battery will aim and correspond to the positive and negative silkscreen-printed symbol in the compartment. Then close the battery door.



Notes:

- a. The best working distance of remote control is within 5 meters without any obstacle in between. Please aim to the remote control sensor locates on the front of unit during operation.
- b. The sensitivity of remote control will become weak when the battery power exhausted. Please replace it with fresh one for operation.
- c. Please take out the battery in case of none-operation in a long time.
- d. Please dispose the battery in an environment friendly way. Please reference the local government requirement for the detail.

General operation

1. Power on/off: switch the main power button on the panel can turn on or off the unit; you also can get standby on/off by press power button from remote control.

2. Play source selection:press the MODE button on the control panel or remote control can switch the play source between FM/Bluetooth/Line in/USB/SD in cycle.

3. Volume adjustment:Turn the main volume knob on the panel can increase or decrease the main output volume level. You can also adjust the volume in small step by press the VOL +/- button from remote control, but the remote control adjusted max volume level is limited by main volume setting level.

4. Treble & bass adjustment:Turn the treble/bass knob on the panel can adjust the output sound level.



5. Sound silence: press the MUTE from remote control can make the sound in silence; press it again to resume the sound output.

6. Preset EQ: Press the EQ button from remote control can switch the EQ between Normal, Rock, POP, Classic, Jazz, News.(Function only available in USB/SD and Bluetooth mode)

7. Play/pause: press the button to pause the music, and press it again to resume the playback in Bluetooth/USB/SD mode.

8. Repeat: press the button to switch the music playback in repeat one/random/repeat all mode.

9. Power and overload:The power LED indicator will light on when the power connection is successful. The clip red color LED will flare in case of overload and detected. This occurs is in order to protect your speaker. Please reduce the volume level in order to prevent serious damage to speaker. (Power clip indicator only available in PA series)



FM radio operation

Before start the FM radio listening, please try to move the unit next to the window or other location in order to better FM reception. The unit was built-in an internal FM antenna.

- 1. Auto scan and preset radio station (All-in-one):** short press the play/pause button on control panel, or press the scan button from remote control to auto scan and save the available radio station. The unit will auto play the first preset station after finished scanning. (max preset station: 99)
- 2. Preset station picking up:** in radio mode, press the NEXT/PREVIOUS button on control panel or remote control to pick up and play the last and next preset station; or key-in the relative preset station number by digits button on remote control to fast pick up the station.

-
3. Auto tune and fast go-to a specific FM station:
 - 3-1. Press and hold the NEXT/PREVIOUS button in few seconds on control panel or remote control to auto tune the available station in up or downward frequency. The unit will stop and auto-play the available station.
 - 3-2. key-in the relative frequency number by digit button from remote control to skip and play the specific defined FM station. For example, you want to listen the FM station frequency at: 89.8MHz; then key-in 8-9-8 from remote control; and the unit will jump and play the station at 89.80MHz frequency accordingly.

USB/SD playback operation

The product includes USB/SD playback function which can decode and playback the music from a USB/SD storage device. Before start the operation, please copy the MP3 format music into the device; and insert the device into the unit first, because the USB/SD mode is only available when the device was plugged on unit successfully. Then the unit will detect and play the inside MP3 music automatically.

- 1. Track selection:** short press the NEXT/PREVIOUS button to select previous and next track; press and hold the button for fast-forwarding and rewinding the playing music. Press the digits button from remote control can fast pick up the relative track.
- 2.** In USB mode, you can achieve the play/pause, mute, repeat, EQ, treble/bass function etc. Please reference the operation from the general operation part on this manual.

Notes:

- a. Connect the USB stick by a USB extension cable for playback is not recommended which may produce noise or intermittent sound due to audio data loss during transfer.
- b. Decode and playback all MP3 format music is not guaranteed.
- c. The max supported storage device is 32GB.
- d. Some different device and brand may take a little long time to playback; please kindly note this is not mal-function.

Bluetooth operation

This product includes Bluetooth function which can wireless playback the music from other Bluetooth device (like smart phone, tablet etc).

- 1.** Press the MODE button repeatedly to enter Bluetooth mode, a notice sound will come out from speaker which means the unit is ready to pair.
- 2.** Enable the Bluetooth function on your device, and search the available device (please reference the device manual for operation), then check the available Bluetooth device on the list. Select "BP (PA/MB series model name)" for pairing.
- 3.** Another notice sound will come out from the speaker after the Bluetooth pairing successfully.
- 4.** Select and play the music from your Bluetooth device, then the sound will come out from the speaker
- 5.** Press the previous/next button can select last and next track during playing.
- 6.** In Bluetooth mode, you can achieve play/pause, mute, EQ, treble and bass adjustment etc. function. Please reference the operation from the general operation part on this manual.

Notices:

- a. All Bluetooth devices are not guaranteed for pairing successfully due to different design and brand.
- b. The best working distance of Bluetooth is within 10 meters without any obstacle in between.
- c. The unit only can pair and work with one Bluetooth device in one time.
- d. In case of an incoming phone call during Bluetooth playback; the music will stop temporary, and resume to playback after end the phone call.
- e. Please quit the current Bluetooth pairing before pair with other device, otherwise our model pairing name will not show on the device list.

Line in/AUX IN/MP3 link operation

In order to wire connection and playback the music with other player or amplifier, please follow up below operation.

1. Using the correct audio cable connect the AUX IN jack (RCA or Cannon type) on the panel of unit, and the another terminal connect with line-out jack of outsourcing player like MP3, CD,DVD, Mixer etc audio device.(Only model PA25 includes Cannon type connector)



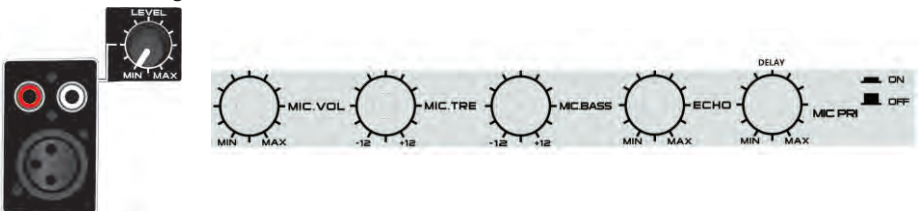
2. Select the music and play on the outsourcing player, then the sound will output from the speaker.
3. In line-in playback mode, the main control is on the outsourcing player side. But you also can control the volume, mute the sound and adjust treble & bass on the speaker system.

Line out/Audio out

Using the correct audio cable connects with the line out jack (RCA or Cannon type) on the panel of the unit, and another terminal connect with AUX IN jack on other active speaker device. Then the sound will output both on the speaker and other speaker device. Please kindly note the main control is on our speaker side during line out playback mode. (This function only available in PA series)

Karaoke

The unit includes microphone function which allow you to sing a song at home or music party. Connect a microphone into the microphone input jack through 6.5cm plug or Cannon type plug (our model includes a 6.5cm wired microphone), and adjust the microphone output level properly by turn the volume control knob. Then you can start to sing.



Tips:

- a. When you are using the microphone for Karaoke function, you can adjust the treble/bass/echo/delay setting by turns the relative knobs.
- b. There may have a big noise come out from speaker when you adjust volume/treble/bass/echo to high level due to overloading and distortion on microphone. This is not mal-function. So please turn and increase these settings slowly, and turn it back or turn off microphone for retrying in case of such big noise faced.
- c. There have microphone priority function in our model. If you select it, the karaoke voice will output from speaker in priority (without background music); and resume to background music output automatically after you singing finished.
- d. You can use the karaoke function and listen the music at same time; in case that you need increase the Karaoke volume and decrease the background music, you can try to adjust the separate microphone volume and main volume knob.(Special to our model PA25, that you need increase or decrease the background music individually by adjust the LEVEL knob which locates next to the Line-in jack).
- e. Please turn off the microphone when you put it next to speaker, otherwise there will cause huge noise.

Battery power and charging

Our model has built-in rechargeable battery which can playback the music in outdoor without AC power connection. The unit will start to charge once the AC power connection is ready. The charging LED will in red color during charging, and turn to green color in case of fully charged. In case of low battery power, the output music will be abnormal or big distortion. Please arrange re-charge for playing. (Model PA25 has not built-in battery)

There also provide a DC 12V battery in connection jack which can connect and play with other external DC 12V battery power source directly.

Note:

Your battery lifetime will last longer if you follow up below simple guidelines for charging and storing.

- a. For charging first few times, please charge the battery fully.
- b. Recharge and store the unit within the temperature range of 5°C~35°C (40°F~95°F).
- c. Do not charge longer than 24 hours. Excessive charging or discharging may shorten the battery's life.
- d. Battery life naturally shortens slowly over time using.
- e. The speaker can play music during charging. Please turn off the speaker and remove power plug if long time not to use.
- f. Due to prolong charging and discharging, the unit battery life will be affected and playback time will also be shortened. We cannot guarantee the same playback consistently throughout and this is not include in our warranty and service.
- g. Charging time: approximately 5~9 hours; music playback time: 3.5 hours around.

Placement

The speaker has been designed for placing on ground, table or speaker tripod (only available in small size model under PA series, tripod not include). Please avoid placing the unit in the corner of room or facing to a wall which may cause sound distortion due to low frequency increment.



Trouble shooting

1. The speaker cannot turn on.

- Please check if the power connection is correct, and main power switch is on.
- Please arrange re-charge in case of lower battery power.

2. No sound output.

- check if the play source is corrected, also the connection status on audio cable.
- Please try to adjust the volume knob.

3. Sound distortion.

- Please try to adjust and play the music at a lower volume level.
- Check the status of treble/bass setting.

4. Background noise on FM station.

- try to move the unit in other place for better reception.
- scan and switch to other station for listening.

Specification

Power source: AC 110-240V, 50/60 Hz.

FM frequency: 87.5-108.0 MHz.

USB rating: 5V, 200mA (PA25: 500mA), 2.0 versions, supported up to 32GB storage device.

Bluetooth: V2.1+EDR, within 10 meters for operation.

RMS output power : 50W RUNNER10

Treble & bass adjustment: -12dB~+12dB.

Standby power consumption: <1W.

(The above spec may update without priority notice.)